

MONTHLY MEMBERSHIP PROGRESS REPORT

LOCATION INDIA

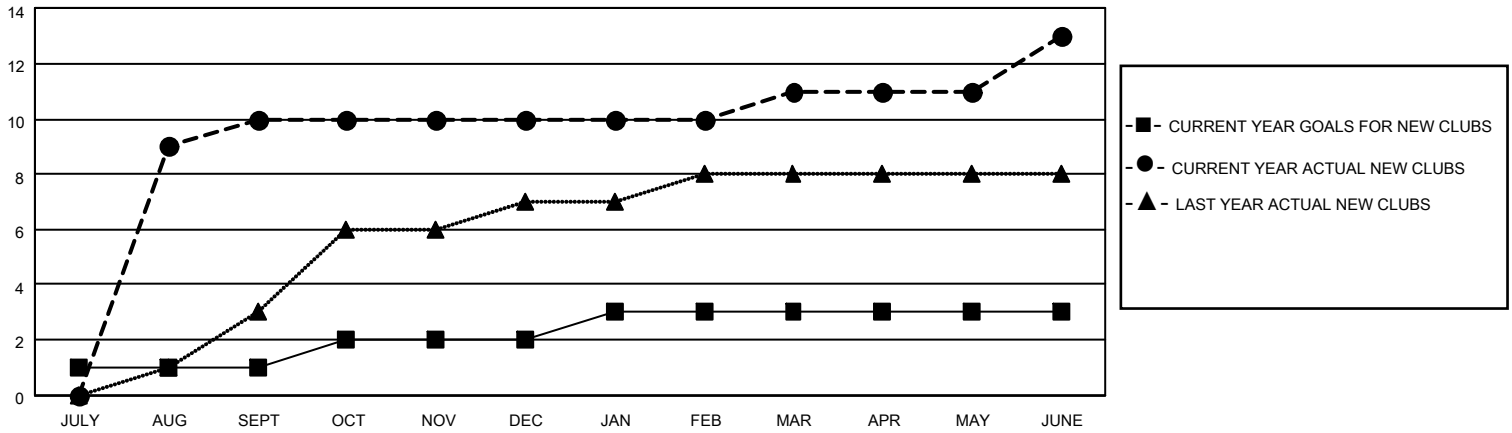
District 320 A

Results as of: 6/30/2023

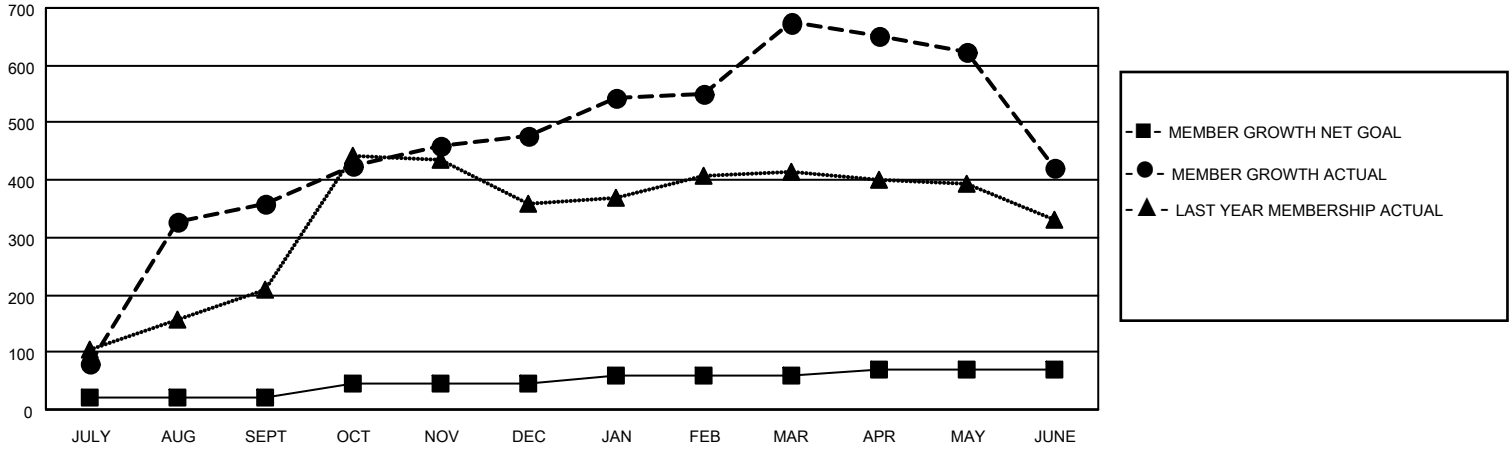
Clubs			
RESULTS FOR 2022-2023			
QUARTER	NEW CLUB GOAL	NEW CLUBS	DROPPED CLUBS
JULY/AUG/SEPT	1	10	0
OCT/NOV/DEC	1	0	2
JAN/FEB/MAR	1	1	0
APR/MAY/JUNE	0	2	4

Members			
RESULTS FOR 2022-2023			
QUARTER	MEMBER GROWTH NET GOAL	MEMBER GROWTH ACTUAL	DROPPED MEMBERS ACTUAL (including transfers)
JULY/AUG/SEPT	20	409	33
OCT/NOV/DEC	25	294	175
JAN/FEB/MAR	15	252	26
APR/MAY/JUNE	10	98	337

GOALS AND ACTUAL NEW CLUBS CUMULATIVE



GOALS AND ACTUAL MEMBERS CUMULATIVE



DROPPED CLUBS: 6

74 CLUBS OF 89 ADDED 1 OR MORE NEW MEMBERS

GENDER DISTRIBUTION

DROPPED MEMBERS

DECEASED	10
CLUB CANCELLED	177
OTHER	384
TOTAL	571

MALE	2,472 (72.96%)
FEMALE	912 (26.92%)
NON BINARY	0 (0.00%)
PREFER NOT TO ANSWER	4 (0.12%)

[CLICK HERE FOR CUMULATIVE MEMBERSHIP DATA](#)

TOTAL FAMILY UNIT MEMBERS	1,530
FAMILY MEMBERS PAYING HALF DUES	827